

Annual Review of Medicine

Heart Failure with Preserved Ejection Fraction: Mechanisms and Treatment Strategies

Kazunori Omote,¹ Frederik H. Verbrugge,^{1,2,3}
and Barry A. Borlaug¹

¹Department of Cardiovascular Medicine, Mayo Clinic, Rochester, Minnesota 55905, USA;
email: borlaug.barry@mayo.edu

²Centre for Cardiovascular Diseases, University Hospital Brussels, 1090 Jette, Belgium

³Biomedical Research Institute, Faculty of Medicine and Life Sciences, Hasselt University,
3500 Hasselt, Belgium

Annu. Rev. Med. 2022. 73:321–37

First published as a Review in Advance on
August 11, 2021

The *Annual Review of Medicine* is online at
med.annualreviews.org

<https://doi.org/10.1146/annurev-med-042220-022745>

Copyright © 2022 by Annual Reviews.
All rights reserved

**ANNUAL
REVIEWS CONNECT**

www.annualreviews.org

- Download figures
- Navigate cited references
- Keyword search
- Explore related articles
- Share via email or social media

Keywords

heart failure, heart failure with preserved ejection fraction, pathophysiology, treatment

Abstract

Approximately half of all patients with heart failure (HF) have a preserved ejection fraction, and the prevalence is growing rapidly given the aging population in many countries and the rising prevalence of obesity, diabetes, and hypertension. Functional capacity and quality of life are severely impaired in heart failure with preserved ejection fraction (HFpEF), and morbidity and mortality are high. In striking contrast to HF with reduced ejection fraction, there are few effective treatments currently identified for HFpEF, and these are limited to decongestion by diuretics, promotion of a healthy active lifestyle, and management of comorbidities. Improved phenotyping of subgroups within the overall HFpEF population might enhance individualization of treatment. This review focuses on the current understanding of the pathophysiologic mechanisms underlying HFpEF and treatment strategies for this complex syndrome.

INTRODUCTION

Heart failure (HF) is a major public health problem that afflicts millions of adults worldwide (1). HF with preserved ejection fraction (HFpEF) accounts for over one-half of all HF cases, and the incidence and prevalence are growing as the population ages and as metabolic disorders including obesity, diabetes, and hypertension increase in prevalence (2–4). Although cardiovascular mortality is lower in HFpEF than in HF with reduced ejection fraction (HFrEF), hospital readmissions are frequent, and quality of life is poor (5, 6). Moreover, no unequivocally effective treatment for HFpEF has been identified in clinical trials (5, 7, 8). This is believed to relate in part to the pathophysiologic heterogeneity within the clinical syndrome of HFpEF, and it is hoped that through better phenotyping of patients, treatments can be more tailored to the individual. In this review, we focus on the current understanding of the pathophysiologic mechanisms underlying HFpEF and then tie this mechanistic understanding together with current and investigational treatment strategies for this complex syndrome.

PATHOPHYSIOLOGY

Although diastolic dysfunction is the fundamental component underlying the pathophysiology in HFpEF, there are multiple cardiac, vascular, and noncardiac abnormalities that contribute. These include impairments in left ventricular (LV) diastolic and systolic function, left arterial (LA) structure and function (i.e., LA myopathy), pulmonary hypertension (PH) and gas exchange abnormalities, right heart dysfunction, autonomic dysregulation, vascular stiffening, myocardial ischemia, endothelial dysfunction, kidney disease, and peripheral abnormalities in skeletal muscle and fat (**Figure 1**). Importantly, not all patients with HFpEF exhibit each of these features, implying the presence of specific phenotypes (3, 8, 9). In this first section, key pathophysiologic mechanisms of HFpEF are individually reviewed from an organ-based perspective. The cellular mechanisms causing these abnormalities are beyond the scope of this review but have recently been reviewed elsewhere (10).

Diastolic Dysfunction

Diastolic dysfunction is broadly defined as an inability to fill the ventricle to an adequate preload volume at normal filling pressures at rest and during activity (8, 9). From a clinical perspective, diastolic dysfunction leads to an increase in LV, LA, and pulmonary capillary pressures that promotes pulmonary congestion, dyspnea, and abnormalities in gas exchange and pulmonary vascular function (11–13). Diastolic dysfunction may be characterized by abnormalities in active relaxation or passive chamber stiffening caused by alterations in the myocardium and extracellular matrix. The active process of pressure decay (relaxation) requires adenosine triphosphate to initiate reuptake of calcium into the sarcoplasmic reticulum (14). Abnormalities in diastolic calcium cycling have been revealed in myocardial tissue from individuals with hypertensive LV hypertrophy (15), coupled with increases in T-tubule density and increased cytosolic calcium, particularly in the setting of diabetes (16, 17). Diastolic function is influenced by heightened afterload. With aging and arterial hypertension, the aorta stiffens, resulting in more rapid pressure wave transit as well as augmentation of reflected pressure waves that cause late systolic afterload elevation, contributing to prolonged relaxation (18, 19). This may lead to elevation in end-diastolic filling pressure when heart rate increases (20).

Increased passive stiffness related to the viscoelastic properties of the myocardium is present in HFpEF, shifting the LV end-diastolic pressure–volume relationship upward and to the left, an effect that is amplified during exercise (21, 22). Such myocardial stiffness is caused by intrinsic

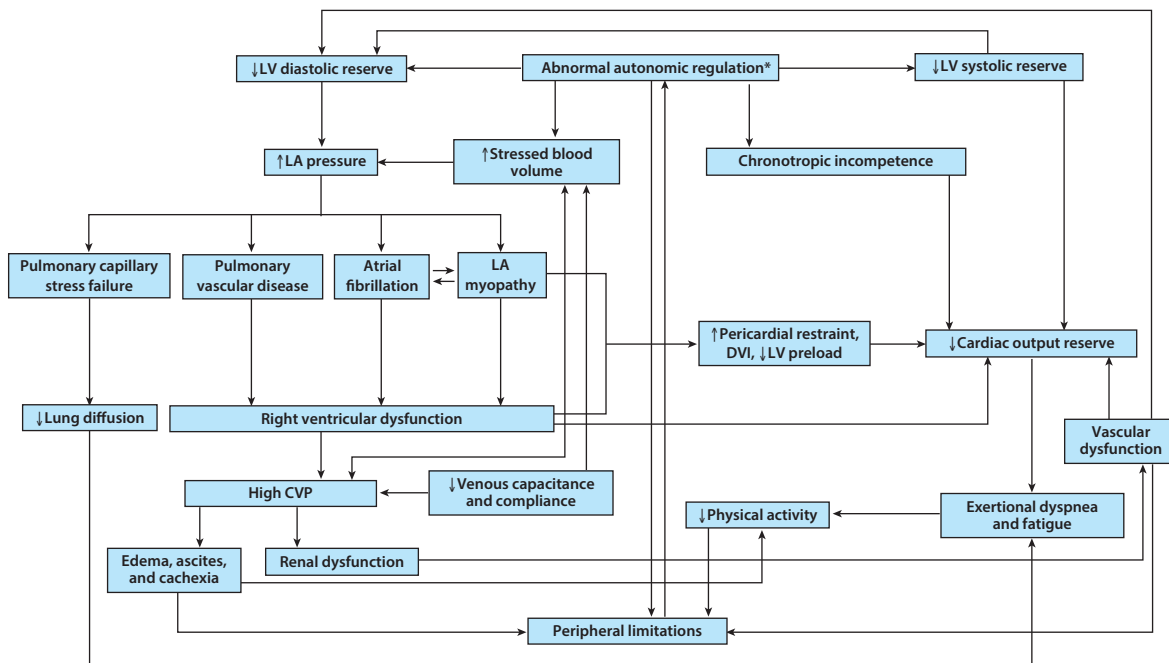


Figure 1

The pathophysiology of heart failure with preserved ejection fraction. Arrows show causal inter-relationships between components. Abbreviations: CVP, central venous pressure; DVI, diastolic ventricular interaction; LA, left atrial; LV, left ventricular. *The term abnormal autonomic regulation is used because it is uncertain whether autonomic dysfunction can connect to chronotropic.

cardiomyocyte alterations, particularly involving the giant macromolecule titin, which essentially acts as a bidirectional spring that affects myocyte stiffness (3, 23). Titin's stiffness properties are dynamically regulated through phosphorylation by cyclic guanosine monophosphate (cGMP) kinases, providing a mechanism by which impaired nitric oxide bioavailability may contribute to HFpEF (24). Stiffness is also increased in HFpEF through alterations in fibrillar collagen in the extracellular matrix (25). Excess myocardial fibrosis may be demonstrated by using novel techniques such as T1 mapping by cardiac magnetic resonance imaging, which reveals an increase in extracellular volume in such patients (26, 27).

Systolic Dysfunction

Despite a preserved ejection fraction, patients with HFpEF often display subtle abnormalities in LV systolic function as well. This may be driven by abnormalities in calcium handling, beta-adrenergic signaling, myocardial energetics, or tissue perfusion reserve (3, 8). Impaired contractility may be detected by echocardiographic tissue Doppler imaging, strain imaging, or other measures of chamber and myocardial contractility (28–31). Patients with LV contractile dysfunction display increased mortality in HFpEF (28, 31). Impaired systolic function is often subtle at rest, but with physiologic stress, impairment may worsen dramatically and contribute to a decreased cardiac output reserve and increased exercise intolerance (30, 32–35). Systolic dysfunction begets diastolic impairments, as the inability to contract to a lower end systolic volume reduces elastic recoil, which attenuates diastolic suction of blood into ventricle, further promoting pulmonary capillary hypertension (30, 36). LV systolic dysfunction also contributes to LA dysfunction through

atrioventricular coupling. Since both chambers sit in continuum with the mitral annulus, a reduction in annular velocity and excursion in the ventricle affects atrial motion in kind.

AF: atrial fibrillation

RVD: right ventricular dysfunction

Left Atrial Myopathy and Atrial Fibrillation

The left atrium plays an important role to facilitate LV filling and protect the pulmonary vasculature and right heart from elevation in LV pressures (37–43). In the early stages of HFpEF, the left atrium is able to compensate for LV diastolic dysfunction, acting through its reservoir function to store blood without untoward elevation in LA pressure, then facilitating LV filling through its booster function. However, prolonged or more advanced LV dysfunction leads to progression of LA dilation and dysfunction, which is associated with PH and right ventricular dysfunction (RVD) (9, 39, 44, 45). This progression is strongly tied to the development of atrial fibrillation (AF), which may be considered an electrical biomarker of LA myopathy (44). In healthy hearts under normal circumstances, LA systole contributes approximately 20% of filling to the left ventricle, but when LV diastolic dysfunction progresses, this contribution increases (46). LA dysfunction and loss of atrioventricular synchrony with AF are associated with dramatic limitations in cardiac output at rest and with activity (44), as well as development of mitral regurgitation due to annular dilation (47). The combination of LA enlargement and increases in right heart volume accompanying LA dysfunction (due to PH, below) leads to an increase in total heart volume. This increase in total heart volume amplifies interaction between the epicardial surface of the heart and the pericardium (44, 48), termed enhanced diastolic ventricular interaction (DVI). With an increase in DVI, left heart pressures can be elevated out of proportion to the degree of LV diastolic stiffness due to the right heart and pericardium compressing the left, and LV preload is reduced, resulting in failure to maintain cardiac output by the Frank Starling mechanism (48).

LA strain assessed by speckle tracking globally reflects LA function, remodeling, and distensibility components that become progressively more impaired in the setting of chronic LV diastolic dysfunction (39, 41–43). Recent studies have demonstrated that LA reservoir strain and LA compliance allow for discrimination of HFpEF from noncardiac dyspnea with greater accuracy than other echocardiographic indices (39). LA compliance and mechanics progressively decline with increasing atrial burden in HFpEF, increasing the risk for AF (44). Development of AF represents a watershed moment in the natural history of HFpEF, associated with increased risk of RVD (discussed below), decreased exercise capacity, and increased mortality (49–51).

Pulmonary Abnormalities and Right Ventricular Dysfunction

Between 50% and 80% of patients with HFpEF have PH, which is defined by a mean pulmonary artery pressure exceeding 20 mm Hg (12). PH in HFpEF is initially caused by passive transmission of elevated downstream LA pressure (termed isolated postcapillary PH). However, with chronic, sustained exposure to elevated LA pressure, pulmonary vascular remodeling often develops, resulting in an increase in pulmonary vascular resistance (termed combined pre- and postcapillary PH) (12, 52). Patients with this precapillary component to PH display poorer exercise capacity, a unique hemodynamic signature characterized by right heart failure and left heart underfilling, and increased risk of hospitalization and death (53–55). While remodeling was originally assumed to reflect abnormalities in the arterial vasculature, recent data have revealed that remodeling in the pulmonary veins plays an equal or perhaps even greater role in increasing pulmonary vascular load in chronic HFpEF (56).

The first victim of PH in HFpEF is the right ventricle (50, 57, 58). The thin-walled right ventricle is poorly suited to eject against high pressure, and this heightened sensitivity to afterload (i.e., pulmonary artery pressure) is further amplified in HFpEF (58). Patients with HFpEF and

RVD often display systemic venous congestion leading to edema, ascites, abdominal congestion, gut malabsorption, renal and hepatic dysfunction, AF, tricuspid regurgitation, and cardiac cachexia (45, 50, 57). Obokata et al. (50) showed that new-onset RVD in patients with HFpEF is independently associated with adverse outcome even after adjustment for other established risk factors, including age, body mass index, AF, LV ejection fraction, and E/e' ratio. This study also found that the development of RVD is closely linked to potentially modifiable risk factors, including AF, coronary artery disease, obesity, and abnormal cardiac hemodynamics (50).

In addition to inducing pulmonary arterial and venous remodeling, long-term exposure to LA hypertension has important effects on the fragile pulmonary capillaries, where repeated episodes of capillary stress failure promote ultrastructural remodeling (45). This leads to a reduction in pulmonary capillary blood volume and impaired alveolar-capillary membrane conductance, both of which reduce the diffusion capacity for carbon monoxide (DL_{CO}) (59, 60). Impairment in DL_{CO} in HFpEF is typically associated with normal findings on chest computed tomography but is strongly associated with increased mortality in this population (61).

Vascular Stiffening and Endothelial Dysfunction

The vast majority (80–90%) of patients with HFpEF are hypertensive, and increases in aortic and conduit vessel stiffening are common, especially among diabetics (62). This vascular stiffening becomes amplified during exertion, contributing to the elevation in LV filling pressures that characteristically develops in HFpEF (18). The combination of increased ventricular and arterial stiffness promotes blood pressure lability, wherein patients frequently oscillate between hypertensive crises and symptomatic hypotension, making treatment challenging (63, 64). In addition to arterial stiffening, recent studies have revealed impairments in venous compliance and capacitance, which importantly contribute to increased filling pressures (32).

In addition to material changes in arterial structure, patients with HFpEF frequently display abnormal endothelium-dependent vasodilation, which is associated with symptom severity, functional limitation, and risk of hospitalization (34, 65). These changes are believed to be related to comorbidity-associated systemic inflammation, which impairs nitric oxide bioavailability, affecting cardiovascular structure and function through a variety of mechanisms (66, 67). Recent studies have revealed abnormalities in coronary microvascular function, which are related to both endothelium-dependent and -independent processes (68–70). The presence of coronary microvascular dysfunction in HFpEF is associated with other markers of greater disease severity, including AF, microalbuminuria, RVD, greater exertional hemodynamic abnormalities, and worse clinical outcome (68, 70, 71). Together with alterations in myocardial supply–demand relationships, coronary microvascular dysfunction may lead to myocardial ischemia and injury during exertion, which are associated with impairments in myocardial reserve and aerobic capacity (71).

Autonomics and Adrenergic Signaling

Cardiac output is typically normal at rest in patients with HFpEF, but the ability to increase cardiac output with exertion is frequently abnormal (33, 72), leading to impaired aerobic capacity. Cardiac output limitations are related in part to impairments in stroke volume reserve from myocardial dysfunction (above) and to chronotropic incompetence (73). Limitations in heart rate reserve in HFpEF appear to be mediated by depressed adrenergic sensitivity rather than central outflow, as plasma norepinephrine and epinephrine increase similarly in HFpEF and matched controls (73), and beta-receptor sensitivity is reduced (74).

There are conflicting reports on autonomic function in HFpEF. Abnormal arterial baroreflex sensitivity was demonstrated in one study (73), whereas another has shown that both central

command (parasympathetic withdrawal) and sympathetic outflow responses with stress are intact in HFpEF (75). In a rat model of HFpEF (76), arterial baroreflex sensitivity was severely depressed, resulting in an inability to tolerate volume loading with greater increases in LA pressure with saline loading. Sympathetic outflow also plays a key role in mediating constriction of large-capacitance veins in the splanchnic circulation to increase venous return to the heart (77). Total blood volume can be functionally divided into two compartments: the unstressed blood volume, which is the volume necessary to fill the vascular space, and the stressed blood volume, which increases pressure within the vasculature. With constriction of the capacitance veins, blood is shifted from the unstressed to the stressed blood volume compartments, pressurizing the vascular tree to augment venous return to the heart. Recent data have shown that this increase in stressed blood volume is exaggerated in patients with HFpEF particularly obesity-related HFpEF. This abnormality was found to strongly contribute to the increase in cardiac filling pressures that develops during exertion in HFpEF (32).

Skeletal Muscle and Fat

According to the Fick principle, oxygen consumption (VO_2) is equal to the product of cardiac output and arterial–venous oxygen content difference (AVO_2diff). Recent studies have reported that many patients with HFpEF display abnormalities in the ability to augment AVO_2diff during exertion, suggesting a problem in peripheral O_2 transport and utilization in skeletal muscle (78–81). Histologic studies have revealed reductions in capillary density and increases in Type II (fast-twitch) fibers, with reduction in the more aerobic Type I fibers (82). There are also abnormalities in mitochondrial function in skeletal muscle in HFpEF that may contribute to abnormalities in peripheral O_2 utilization (83, 84).

HFpEF is strongly tied to excess body fat. In the United States, approximately 75% of patients are obese. Patients with HFpEF and obesity display features consistent with a distinct phenotype, wherein there is greater plasma volume expansion, higher stressed blood volume, more RVD and PH, greater epicardial fat, enhanced ventricular interdependence, and more systemic inflammation (32, 85, 86). Increases in visceral fat appear to be particularly important, as elevated abdominal visceral adipose tissue is independently associated with increased risk of HFpEF (87, 88). The relationship between visceral fat and HFpEF is notably stronger in women; increased abdominal visceral fat is associated with more severe hemodynamic alterations in women with HFpEF compared to men (89).

Masqueraders of HFpEF

A number of cardiovascular diseases may be confused with the typical form of “garden-variety” HFpEF discussed thus far, including cardiac amyloidosis; sarcoidosis; infiltrative, restrictive, or hypertrophic cardiomyopathy; constrictive pericarditis; valvular heart disease; high-output HF; myocarditis; and toxin-mediated cardiomyopathies (**Table 1**). Discussion of these secondary causes of HF is beyond the scope of this review, but it is important to emphasize that they should not be regarded as true primary HFpEF. Because the secondary etiologies require specific treatments, every effort should be made to exclude these masqueraders when evaluating the patient with new-onset HF (7).

TREATMENT

To date, no conclusively effective treatment has been identified for HFpEF, and therapies with efficacy for HFrEF have failed to improve outcomes in HFpEF (7, 8). Current treatment

Table 1 Masqueraders of HFpEF

Secondary causes of heart failure with a normal ejection fraction	Typical diagnostic methods	Specific treatment strategies
Cardiac amyloidosis	Screen for presence of a monoclonal light chain CMR EMB Tc-99m-PYP	Transthyretin tetramer stabilizers for transthyretin amyloid cardiomyopathy Chemotherapy for light-chain amyloidosis
Cardiac sarcoidosis	Blood test (ACE, lysozyme, sIL-2R) EMB CMR ⁶⁷ Ga scintigraphy or ¹⁸ FDG-PET	Corticosteroid Immunosuppressants
Hypertrophic cardiomyopathy	Echocardiogram CMR	β-blockers Calcium-channel blockers Alcohol septal ablation for obstructive cardiomyopathy Avoid vasodilators
Valvular heart disease	Echocardiogram Invasive hemodynamic measurements	Percutaneous valve interventions Surgical interventions
High-output heart failure	Invasive hemodynamic measurements (including cardiac output as well as mixed venous oxygen saturation) Evaluation for physical signs (hyperthyroidism, cardiac beriberi, etc.)	Treatments for underlying disease causing high-output state such as fistula, hyperthyroidism, vitamin B-1 deficiency, or ligation for shunts
Myocarditis	12-lead ECG and/or Holter (AV block or ST-T wave change) Blood test (troponin) CMR EMB	Immunosuppressive agents for eosinophilic myocarditis or giant cell myocarditis
Constrictive pericarditis	Invasive hemodynamic measurements CMR Chest CT Echocardiogram	Pericardiectomy
Toxin-mediated cardiomyopathies	Assessment of clinical and medical history (e.g., chemotherapeutics, illicit) Blood testing EMB	Removal of toxin

Abbreviations: ACE, angiotensin converting enzyme; AV, atrioventricular; CMR, cardiovascular magnetic resonance; CT, computed tomography; ECG, electrocardiogram; EMB, endomyocardial biopsy; ¹⁸FDG-PET, ¹⁸F-fluorodeoxyglucose positron emission tomography; sIL-2R, soluble interleukin-2 receptor; Tc-99m-PYP, Technetium-99m pyrophosphate.

recommendations focus on diuretics, including mineralocorticoid receptor antagonists (MRAs) to reduce congestion. Lifestyle interventions, including exercise and weight loss through caloric restriction, have shown promise (90–92). Finally, management of common comorbidities such as coronary artery disease and AF may also improve prognosis. Complete revascularization is associated with preservation of LV function and lower mortality (93), while treatment of AF with catheter ablation may improve outcomes as well (94, 95). Both approaches require testing in controlled trials.

Pharmacologic Therapy

Diuretics. Despite the absence of placebo-controlled trial data, diuresis is a cornerstone therapy in HFpEF that improves outcomes. A post hoc analysis of the CHAMPION (CardioMEMS Heart Sensor Allows Monitoring of Pressure to Improve Outcomes in NYHA Class III Heart Failure Patients) trial indirectly supports the efficacy of aggressive diuresis in patients with HFpEF (96). In the CHAMPION trial (97), individuals with HF and an implantable hemodynamic monitor (CardioMEMSTM Heart Sensor) were randomly assigned to a treatment strategy guided by knowledge of pulmonary artery pressures or usual care. Subjects with pressure-informed therapy received more frequent diuretic titration and demonstrated a significantly reduced risk of HF readmissions. The number needed to treat to prevent one HF hospitalization over 18 months in patients with normal ejection fraction (EF) was 2.

Mineralocorticoid receptor antagonists. The MRA spironolactone was evaluated as a treatment for HFpEF in the TOPCAT (Treatment of Preserved Cardiac Function Heart Failure With an Aldosterone Antagonist) trial (98). As compared to placebo, spironolactone did not reduce the composite primary outcome of cardiovascular-related death, aborted cardiac arrest, and HF hospitalization in patients with symptomatic HFpEF (EF $\geq 45\%$) (98). However, a reduction in HF readmissions was observed with spironolactone, and a post hoc analysis revealed a significant reduction in the rate of the primary outcome with spironolactone compared with placebo among patients who were enrolled according to elevated natriuretic peptide levels, with important regional variations (99). Roughly half of the patients were enrolled in the Americas and the other half in Eastern Europe. The latter group displayed very low event rates, raising questions about the veracity of the diagnosis of HFpEF, and in a post hoc analysis restricted to the Americas, spironolactone reduced the primary endpoint compared with placebo. Other novel MRAs such as finerenone hold promise in HFpEF and are under investigation (NCT04435626). Patients with HF and an EF $\geq 45\%$ are recommended to be treated with an MRA (class IIb indication), usually in addition to a loop diuretic (100).

Dual angiotensin-neprilysin inhibitor. The dual angiotensin-neprilysin inhibitor sacubitril-valsartan was tested in the PARAGON-HF (Efficacy and Safety of LCZ696 Compared to Valsartan, on Morbidity and Mortality in Heart Failure Patients With Preserved Ejection Fraction) trial (101). In this trial, angiotensin-neprilysin inhibition narrowly missed showing a reduction in the frequency of the primary composite outcome of death from cardiovascular causes and total HF hospitalizations compared to treatment with valsartan only [rate ratio 0.87, 95% confidence interval (CI) 0.75–1.01, $p = 0.06$]. Prespecified subgroup analyses suggest a possible greater benefit among individuals with EF below the median ($\leq 57\%$) and among women (102, 103). In addition, a post hoc analysis found that patients with more recent HF hospitalization derived more benefit from sacubitril-valsartan, with no benefit among patients with no prior hospitalization (104).

Other Pharmacotherapies

Angiotensin-converting enzyme inhibitors, angiotensin receptor blockers, and beta-adrenergic antagonists are frequently used to treat comorbid conditions in HFpEF such as kidney disease and coronary artery disease, but evidence to support their use independent of these comorbidities is scant (7, 8). The data are particularly weak for beta-adrenergic antagonists (105), which have also been associated with adverse outcomes in HFpEF (106). A prespecified subgroup analysis of the SOLOIST-WHF (Effect of Sotagliflozin on Cardiovascular Events in Patients with Type 2

Diabetes Post Worsening Heart Failure) trial including participants with HFpEF revealed that the rate of cardiovascular death or hospitalization for HF was lower with the sodium-glucose cotransporter 2 (SGLT2) inhibitor sotagliflozin compared with placebo (107). This effect is believed to be related mainly to renal protective effects, and SGLT2 inhibitors are currently being tested in two large pivotal trials in HFpEF, the results of which are eagerly anticipated (NCT03619213, NCT03057951).

Observational studies suggest benefit from statins in HFpEF (108), and these patients frequently have other indications for this class of drug. Numerous trials have evaluated whether treatments that augment nitric oxide signaling might be effective in HFpEF, including phosphodiesterase inhibitors (109), organic nitrates (110), inorganic nitrite (111), and stimulators of guanylate cyclase (112, 113), with unanimously disappointing results.

Lifestyle Intervention Targeting Cardiometabolic Risk

Exercise training has been shown to improve exercise capacity as well as quality of life in patients with HFpEF (90, 92). There appears to be no difference in moderate-intensity continuous and interval training regimens, but regardless of training intensity, beneficial effects are difficult to maintain chronically (92). Intentional weight loss may improve morbidity and mortality in HFpEF given favorable effects on hemodynamics, heart rate, and blood pressure (114). A recent randomized clinical trial found that short-term, modest weight loss induced by caloric restriction improved peak oxygen consumption (peak VO_2) in obese patients with HFpEF (90). Clinical trials evaluating pharmacologic weight loss as a treatment for HFpEF are currently under way (NCT04788511, NCT04847557).

Investigational Device-Based Therapies

Reducing LA pressure with a percutaneously implanted intra-atrial septostomy device has been shown to improve exercise hemodynamics, symptoms, and exercise capacity in patients with HFpEF (115–118), and such devices are being evaluated in ongoing clinical trials (NCT03499236, NCT03088033). The interatrial shunt device may also improve pulmonary vascular function in patients without significant preexisting pulmonary vascular disease (119). As pericardial restraint and enhanced ventricular interdependence contribute to elevation in filling pressures in many patients with HFpEF, percutaneous pericardial resection is another potential treatment that has shown promise in HFpEF (120, 121) and is currently under investigation (NCT03923673). A single-center study is investigating the efficacy of pacemakers to treat chronotropic incompetence in patients with HFpEF (NCT02145351). Blockade of the greater splanchnic nerve has been shown to effectively reduce cardiac filling pressures in HFrEF (122). A multicenter trial is under way to evaluate the effects of greater splanchnic nerve ablation in HFpEF (NCT04592445).

Phenotype-Specific Approach

The failure of clinical trials to identify effective treatments using a one-size-fits-all approach may be at least partly explained by heterogeneity in the underlying pathophysiologic mechanisms of HFpEF, as described above (7). Accordingly, it is hoped that better phenotyping of patients based upon their predominant pathophysiologic abnormalities may enable more individually tailored therapy (**Figure 2**). Several early-phase trials have begun to target more specific phenotypes, evaluating weight loss for obese HFpEF (90); levosimendan for PH/RVD (123); nitrite (124, 125), pericardiectomy (120, 121), atrial septostomy for patients with high LV filling pressures during exercise (115); and inorganic nitrite for peripheral limitations (126). While this approach holds great

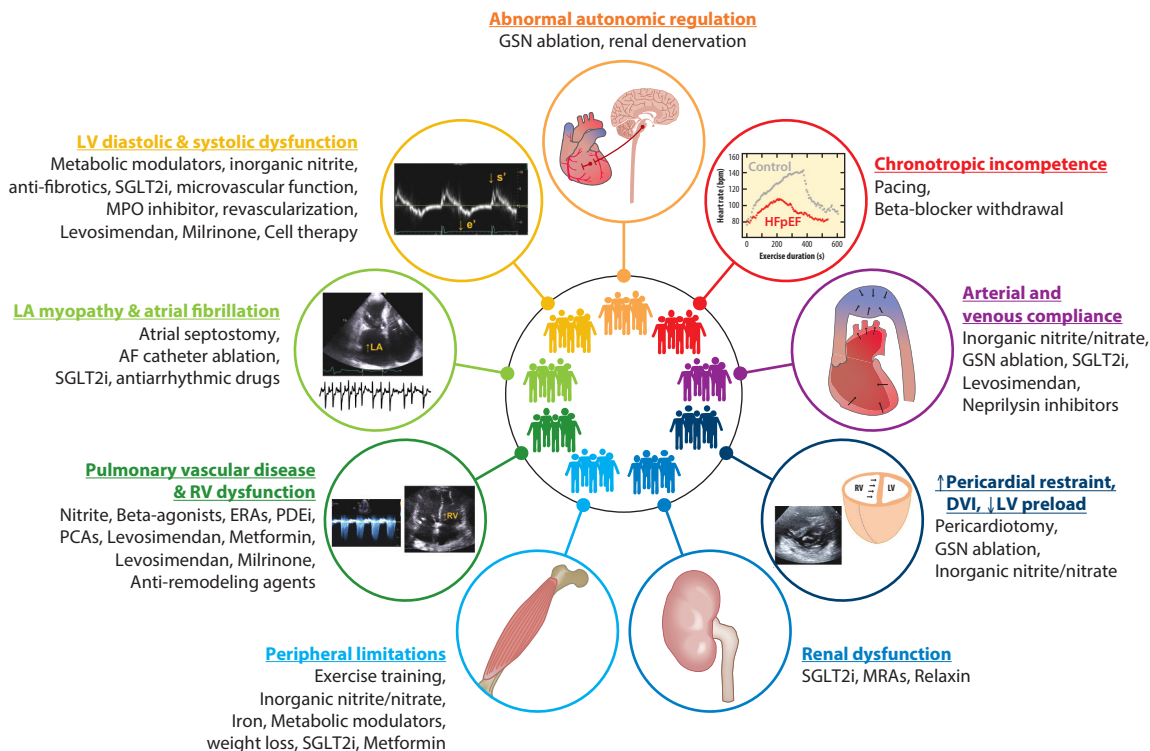


Figure 2

Potential treatment according to HFpEF phenogroups. Abbreviations: AF, atrial fibrillation; CVP, central venous pressure; DVI, diastolic ventricular interaction; ERAs, endothelin receptor antagonists; GSN, greater splanchnic nerve; HFpEF, heart failure with preserved ejection fraction; LA, left atrial; LV, left ventricular; MPO, myeloperoxidase; MRAs, mineralocorticoid receptor antagonists; PCAs, prostacyclin analogs; PDEi, phosphodiesterase inhibitor; RV, right ventricular; SGLT2i, sodium-glucose transporter 2 inhibitor.

promise, there is as yet no universally accepted method by which different HFpEF phenogroups should be categorized for diagnostic and therapeutic purposes, and there is marked overlap between groups shown in **Figure 2** (127, 128).

CONCLUSION

The prevalence of HFpEF has grown to epidemic proportions, and no single treatment for HFpEF has yet been identified that clearly improves outcomes. The lack of therapeutic options is largely related to the complexity and heterogeneity within the HFpEF syndrome, limiting one-size-fits-all approaches that have proven so effective in HFrEF. Limitations in ventricular diastolic and systolic function; LA myopathy; ventricular-vascular uncoupling; pulmonary vascular disease and RVD; altered venous capacitance; and abnormalities in the periphery, including the vasculature, endothelium, autonomics, fat, and skeletal muscle, each play a significant but variable role within the individual patient. Current treatment of HFpEF is aimed at volume control with diuretics, consideration for use of MRA, and management of comorbidities and lifestyle modifications, including exercise training and weight loss. Adequately powered randomized clinical trials should investigate whether novel therapies aimed at specific HFpEF pathophysiologic phenotypes can improve outcomes and quality of life.

DISCLOSURE STATEMENT

The authors are not aware of any affiliations, memberships, funding, or financial holdings that might be perceived as affecting the objectivity of this review.

ACKNOWLEDGMENTS

B.A.B. is supported by grant number R01 HL128526 from the National Institutes of Health. F.H.V. is supported by the Special Research Fund (BOF) of Hasselt University (BOF19PD04). K.O. is supported by a Japan Heart Foundation/Bayer Yakuhin Research Grant Abroad and the JSPS Overseas Research Fellowships from the Japan Society for the Promotion of Science.

LITERATURE CITED

1. Virani SS, Alonso A, Benjamin EJ, et al. 2020. Heart disease and stroke statistics—2020 update: a report from the American Heart Association. *Circulation* 141:e139–e596
2. Owan TE, Hodge DO, Herges RM, et al. 2006. Trends in prevalence and outcome of heart failure with preserved ejection fraction. *N. Engl. J. Med.* 355:251–59
3. Shah SJ, Borlaug BA, Kitzman DW, et al. 2020. Research priorities for heart failure with preserved ejection fraction: National Heart, Lung, and Blood Institute Working Group summary. *Circulation* 141:1001–26
4. Tsao CW, Lyass A, Enserro D, et al. 2018. Temporal trends in the incidence of and mortality associated with heart failure with preserved and reduced ejection fraction. *JACC Heart Fail.* 6:678–85
5. Reddy YNV, Rikhi A, Obokata M, et al. 2020. Quality of life in heart failure with preserved ejection fraction: importance of obesity, functional capacity, and physical inactivity. *Eur. J. Heart Fail.* 22:1009–18
6. Shah KS, Xu H, Matsouka RA, et al. 2017. Heart failure with preserved, borderline, and reduced ejection fraction: 5-year outcomes. *J. Am. Coll. Cardiol.* 70:2476–86
7. Borlaug BA. 2020. Evaluation and management of heart failure with preserved ejection fraction. *Nat. Rev. Cardiol.* 17:559–73
8. Pfeffer MA, Shah AM, Borlaug BA. 2019. Heart failure with preserved ejection fraction in perspective. *Circ. Res.* 124:1598–617
9. Borlaug BA. 2014. The pathophysiology of heart failure with preserved ejection fraction. *Nat. Rev. Cardiol.* 11:507–15
10. Mishra S, Kass DA. 2021. Cellular and molecular pathobiology of heart failure with preserved ejection fraction. *Nat. Rev. Cardiol.* 18:400–23
11. Obokata M, Olson TP, Reddy YNV, et al. 2018. Haemodynamics, dyspnoea, and pulmonary reserve in heart failure with preserved ejection fraction. *Eur. Heart J.* 39:2810–21
12. Reddy YNV, Borlaug BA. 2021. Pulmonary hypertension in left heart disease. *Clin. Chest Med.* 42:39–58
13. Reddy YNV, Obokata M, Wiley B, et al. 2019. The haemodynamic basis of lung congestion during exercise in heart failure with preserved ejection fraction. *Eur. Heart J.* 40:3721–30
14. Bers DM. 2008. Calcium cycling and signaling in cardiac myocytes. *Annu. Rev. Physiol.* 70:23–49
15. Selby DE, Palmer BM, LeWinter MM, et al. 2011. Tachycardia-induced diastolic dysfunction and resting tone in myocardium from patients with a normal ejection fraction. *J. Am. Coll. Cardiol.* 58:147–54
16. Frisk M, Le C, Shen X, et al. 2021. Etiology-dependent impairment of diastolic cardiomyocyte calcium homeostasis in heart failure with preserved ejection fraction. *J. Am. Coll. Cardiol.* 77:405–19
17. Kilfoil PJ, Lotteau S, Zhang R, et al. 2020. Distinct features of calcium handling and β -adrenergic sensitivity in heart failure with preserved versus reduced ejection fraction. *J. Physiol.* 598:5091–108
18. Reddy YNV, Andersen MJ, Obokata M, et al. 2017. Arterial stiffening with exercise in patients with heart failure and preserved ejection fraction. *J. Am. Coll. Cardiol.* 70:136–48
19. Weber T, Chirinos JA. 2018. Pulsatile arterial haemodynamics in heart failure. *Eur. Heart J.* 39:3847–54
20. Hay I, Rich J, Ferber P, et al. 2005. Role of impaired myocardial relaxation in the production of elevated left ventricular filling pressure. *Am. J. Physiol. Heart Circ. Physiol.* 288:H1203–8

21. Borlaug BA, Jaber WA, Ommen SR, et al. 2011. Diastolic relaxation and compliance reserve during dynamic exercise in heart failure with preserved ejection fraction. *Heart* 97:964–69
22. Zile MR, Baicu CF, Gaasch WH. 2004. Diastolic heart failure—abnormalities in active relaxation and passive stiffness of the left ventricle. *N. Engl. J. Med.* 350:1953–59
23. Methawasin M, Strom JG, Slater RE, et al. 2016. Experimentally increasing the compliance of titin through RNA binding motif-20 (RBM20) inhibition improves diastolic function in a mouse model of heart failure with preserved ejection fraction. *Circulation* 134:1085–99
24. van Heerebeek L, Hamdani N, Falcão-Pires I, et al. 2012. Low myocardial protein kinase G activity in heart failure with preserved ejection fraction. *Circulation* 126:830–39
25. Zile MR, Baicu CF, Ikonomidis JS, et al. 2015. Myocardial stiffness in patients with heart failure and a preserved ejection fraction: contributions of collagen and titin. *Circulation* 131:1247–59
26. Ng ACT, Delgado V, Borlaug BA, et al. 2021. Diabetes: the combined burden of obesity and diabetes on heart disease and the role of imaging. *Nat. Rev. Cardiol.* 18:291–304
27. Rommel KP, von Roeder M, Latuscynski K, et al. 2016. Extracellular volume fraction for characterization of patients with heart failure and preserved ejection fraction. *J. Am. Coll. Cardiol.* 67:1815–25
28. Borlaug BA, Lam CS, Roger VL, et al. 2009. Contractility and ventricular systolic stiffening in hypertensive heart disease insights into the pathogenesis of heart failure with preserved ejection fraction. *J. Am. Coll. Cardiol.* 54:410–18
29. Kraigher-Krainer E, Shah AM, Gupta DK, et al. 2014. Impaired systolic function by strain imaging in heart failure with preserved ejection fraction. *J. Am. Coll. Cardiol.* 63:447–56
30. Tan YT, Wenzelburger F, Lee E, et al. 2009. The pathophysiology of heart failure with normal ejection fraction: exercise echocardiography reveals complex abnormalities of both systolic and diastolic ventricular function involving torsion, untwist, and longitudinal motion. *J. Am. Coll. Cardiol.* 54:36–46
31. Shah AM, Claggett B, Sweitzer NK, et al. 2015. Prognostic importance of impaired systolic function in heart failure with preserved ejection fraction and the impact of spironolactone. *Circulation* 132:402–14
32. Sorimachi H, Burkhoff D, Verbrugge FH, et al. 2021. Obesity, venous capacitance, and venous compliance in heart failure with preserved ejection fraction. *Eur. J. Heart Fail.* 23:1648–58
33. Borlaug BA, Kane GC, Melenovsky V, et al. 2016. Abnormal right ventricular-pulmonary artery coupling with exercise in heart failure with preserved ejection fraction. *Eur. Heart J.* 37:3293–302
34. Borlaug BA, Olson TP, Lam CS, et al. 2010. Global cardiovascular reserve dysfunction in heart failure with preserved ejection fraction. *J. Am. Coll. Cardiol.* 56:845–54
35. Phan TT, Abozguia K, Nallur Shivu G, et al. 2009. Heart failure with preserved ejection fraction is characterized by dynamic impairment of active relaxation and contraction of the left ventricle on exercise and associated with myocardial energy deficiency. *J. Am. Coll. Cardiol.* 54:402–9
36. Backhaus SJ, Lange T, George EF, et al. 2021. Exercise stress real-time cardiac magnetic resonance imaging for noninvasive characterization of heart failure with preserved ejection fraction: the HFpEF-Stress Trial. *Circulation* 143:1484–98
37. Melenovsky V, Borlaug BA, Rosen B, et al. 2007. Cardiovascular features of heart failure with preserved ejection fraction versus nonfailing hypertensive left ventricular hypertrophy in the urban Baltimore community: the role of atrial remodeling/dysfunction. *J. Am. Coll. Cardiol.* 49:198–207
38. Melenovsky V, Hwang SJ, Redfield MM, et al. 2015. Left atrial remodeling and function in advanced heart failure with preserved or reduced ejection fraction. *Circ. Heart Fail.* 8:295–303
39. Reddy YNV, Obokata M, Egbe A, et al. 2019. Left atrial strain and compliance in the diagnostic evaluation of heart failure with preserved ejection fraction. *Eur. J. Heart Fail.* 21:891–900
40. Triposkiadis F, Pieske B, Butler J, et al. 2016. Global left atrial failure in heart failure. *Eur. J. Heart Fail.* 18:1307–20
41. Freed BH, Daruwalla V, Cheng JY, et al. 2016. Prognostic utility and clinical significance of cardiac mechanics in heart failure with preserved ejection fraction: importance of left atrial strain. *Circ. Cardiovasc. Imaging* 9:e003754
42. Santos AB, Roca GQ, Claggett B, et al. 2016. Prognostic relevance of left atrial dysfunction in heart failure with preserved ejection fraction. *Circ. Heart Fail.* 9:e002763
43. Telles F, Nanayakkara S, Evans S, et al. 2019. Impaired left atrial strain predicts abnormal exercise haemodynamics in heart failure with preserved ejection fraction. *Eur. J. Heart Fail.* 21:495–505

44. Reddy YNV, Obokata M, Verbrugge FH, et al. 2020. Atrial dysfunction in patients with heart failure with preserved ejection fraction and atrial fibrillation. *J. Am. Coll. Cardiol.* 76:1051–64
45. Verbrugge FH, Guazzi M, Testani JM, et al. 2020. Altered hemodynamics and end-organ damage in heart failure: impact on the lung and kidney. *Circulation* 142:998–1012
46. Phan TT, Abozguia K, Shivu GN, et al. 2009. Increased atrial contribution to left ventricular filling compensates for impaired early filling during exercise in heart failure with preserved ejection fraction. *J. Card. Fail.* 15:890–7
47. Tamargo M, Obokata M, Reddy YNV, et al. 2020. Functional mitral regurgitation and left atrial myopathy in heart failure with preserved ejection fraction. *Eur. J. Heart Fail.* 22:489–98
48. Borlaug BA, Reddy YNV. 2019. The role of the pericardium in heart failure: implications for pathophysiology and treatment. *JACC Heart Fail.* 7:574–85
49. Lam CS, Rienstra M, Tay WT, et al. 2017. Atrial fibrillation in heart failure with preserved ejection fraction: association with exercise capacity, left ventricular filling pressures, natriuretic peptides, and left atrial volume. *JACC Heart Fail.* 5:92–98
50. Obokata M, Reddy YNV, Melenovsky V, et al. 2019. Deterioration in right ventricular structure and function over time in patients with heart failure and preserved ejection fraction. *Eur. Heart J.* 40:689–97
51. Zakeri R, Chamberlain AM, Roger VL, et al. 2013. Temporal relationship and prognostic significance of atrial fibrillation in heart failure patients with preserved ejection fraction: a community-based study. *Circulation* 128:1085–93
52. Guazzi M, Naeije R. 2017. Pulmonary hypertension in heart failure: pathophysiology, pathobiology, and emerging clinical perspectives. *J. Am. Coll. Cardiol.* 69:1718–34
53. Gorter TM, Obokata M, Reddy YNV, et al. 2018. Exercise unmasks distinct pathophysiologic features in heart failure with preserved ejection fraction and pulmonary vascular disease. *Eur. Heart J.* 39:2825–35
54. Lai YC, Wang L, Gladwin MT. 2019. Insights into the pulmonary vascular complications of heart failure with preserved ejection fraction. *J. Physiol.* 597:1143–56
55. Vanderpool RR, Saul M, Nourai M, et al. 2018. Association between hemodynamic markers of pulmonary hypertension and outcomes in heart failure with preserved ejection fraction. *JAMA Cardiol.* 3:298–306
56. Fayyaz AU, Edwards WD, Maleszewski JJ, et al. 2018. Global pulmonary vascular remodeling in pulmonary hypertension associated with heart failure and preserved or reduced ejection fraction. *Circulation* 137:1796–810
57. Gorter TM, Hoendermis ES, van Veldhuisen DJ, et al. 2016. Right ventricular dysfunction in heart failure with preserved ejection fraction: a systematic review and meta-analysis. *Eur. J. Heart Fail.* 18:1472–87
58. Melenovsky V, Hwang SJ, Lin G, et al. 2014. Right heart dysfunction in heart failure with preserved ejection fraction. *Eur. Heart J.* 35:3452–62
59. Olson TP, Johnson BD, Borlaug BA. 2016. Impaired pulmonary diffusion in heart failure with preserved ejection fraction. *JACC Heart Fail.* 4:490–98
60. Fermoye CC, Stewart GM, Borlaug BA, et al. 2021. Simultaneous measurement of lung diffusing capacity and pulmonary hemodynamics reveals exertional alveolar-capillary dysfunction in heart failure with preserved ejection fraction. *J. Am. Heart Assoc.* 10(16):e019950
61. Hoepfer MM, Meyer K, Rademacher J, et al. 2016. Diffusion capacity and mortality in patients with pulmonary hypertension due to heart failure with preserved ejection fraction. *JACC Heart Fail.* 4:441–49
62. Chirinos JA, Bhattacharya P, Kumar A, et al. 2019. Impact of diabetes mellitus on ventricular structure, arterial stiffness, and pulsatile hemodynamics in heart failure with preserved ejection fraction. *J. Am. Heart Assoc.* 8:e011457
63. Kawaguchi M, Hay I, Fetis B, et al. 2003. Combined ventricular systolic and arterial stiffening in patients with heart failure and preserved ejection fraction: implications for systolic and diastolic reserve limitations. *Circulation* 107:714–20
64. Schwartzberg S, Redfield MM, From AM, et al. 2012. Effects of vasodilation in heart failure with preserved or reduced ejection fraction: implications of distinct pathophysiologies on response to therapy. *J. Am. Coll. Cardiol.* 59:442–51

65. Akiyama E, Sugiyama S, Matsuzawa Y, et al. 2012. Incremental prognostic significance of peripheral endothelial dysfunction in patients with heart failure with normal left ventricular ejection fraction. *J. Am. Coll. Cardiol.* 60:1778–86
66. Paulus WJ, Tschöpe C. 2013. A novel paradigm for heart failure with preserved ejection fraction: comorbidities drive myocardial dysfunction and remodeling through coronary microvascular endothelial inflammation. *J. Am. Coll. Cardiol.* 62:263–71
67. Sanders-van Wijk S, Tromp J, Beussink-Nelson L, et al. 2020. Proteomic evaluation of the comorbidity-inflammation paradigm in heart failure with preserved ejection fraction: results from the PROMIS-HFpEF study. *Circulation* 142:2029–44
68. Ahmad A, Corban MT, Toya T, et al. 2020. Coronary microvascular dysfunction is associated with exertional haemodynamic abnormalities in patients with heart failure with preserved ejection fraction. *Eur. J. Heart Fail.* <https://doi.org/10.1002/ehf.2010>
69. Shah SJ, Lam CSP, Svedlund S, et al. 2018. Prevalence and correlates of coronary microvascular dysfunction in heart failure with preserved ejection fraction: PROMIS-HFpEF. *Eur. Heart J.* 39:3439–50
70. Yang JH, Obokata M, Reddy YNV, et al. 2020. Endothelium-dependent and independent coronary microvascular dysfunction in patients with heart failure with preserved ejection fraction. *Eur. J. Heart Fail.* 22:432–41
71. Obokata M, Reddy YNV, Melenovsky V, et al. 2018. Myocardial injury and cardiac reserve in patients with heart failure and preserved ejection fraction. *J. Am. Coll. Cardiol.* 72:29–40
72. Abudiah MM, Redfield MM, Melenovsky V, et al. 2013. Cardiac output response to exercise in relation to metabolic demand in heart failure with preserved ejection fraction. *Eur. J. Heart Fail.* 15:776–85
73. Borlaug BA, Melenovsky V, Russell SD, et al. 2006. Impaired chronotropic and vasodilator reserves limit exercise capacity in patients with heart failure and a preserved ejection fraction. *Circulation* 114:2138–47
74. Sarma S, Stoller D, Hendrix J, et al. 2020. Mechanisms of chronotropic incompetence in heart failure with preserved ejection fraction. *Circ. Heart Fail.* 13:e006331
75. Sarma S, Howden E, Lawley J, et al. 2021. Central command and the regulation of exercise heart rate response in heart failure with preserved ejection fraction. *Circulation* 143:783–89
76. Funakoshi K, Hosokawa K, Kishi T, et al. 2014. Striking volume intolerance is induced by mimicking arterial baroreflex failure in normal left ventricular function. *J. Card. Fail.* 20:53–59
77. Fudim M, Sobotka PA, Dunlap ME. 2021. Extracardiac abnormalities of preload reserve: mechanisms underlying exercise limitation in heart failure with preserved ejection fraction, autonomic dysfunction, and liver disease. *Circ. Heart Fail.* 14:e007308
78. Bhella PS, Prasad A, Heinicke K, et al. 2011. Abnormal haemodynamic response to exercise in heart failure with preserved ejection fraction. *Eur. J. Heart Fail.* 13:1296–304
79. Dhakal BP, Malhotra R, Murphy RM, et al. 2015. Mechanisms of exercise intolerance in heart failure with preserved ejection fraction: the role of abnormal peripheral oxygen extraction. *Circ. Heart Fail.* 8:286–94
80. Haykowsky MJ, Brubaker PH, John JM, et al. 2011. Determinants of exercise intolerance in elderly heart failure patients with preserved ejection fraction. *J. Am. Coll. Cardiol.* 58:265–74
81. Houstis NE, Eisman AS, Pappagianopoulos PP, et al. 2018. Exercise intolerance in heart failure with preserved ejection fraction: diagnosing and ranking its causes using personalized O₂ pathway analysis. *Circulation* 137:148–61
82. Kitzman DW, Nicklas B, Kraus WE, et al. 2014. Skeletal muscle abnormalities and exercise intolerance in older patients with heart failure and preserved ejection fraction. *Am. J. Physiol. Heart Circ. Physiol.* 306:H1364–70
83. Kumar AA, Kelly DP, Chirinos JA. 2019. Mitochondrial dysfunction in heart failure with preserved ejection fraction. *Circulation* 139:1435–50
84. Molina AJ, Bharadwaj MS, Van Horn C, et al. 2016. Skeletal muscle mitochondrial content, oxidative capacity, and Mfn2 expression are reduced in older patients with heart failure and preserved ejection fraction and are related to exercise intolerance. *JACC Heart Fail.* 4:636–45
85. Koepp KE, Obokata M, Reddy YNV, et al. 2020. Hemodynamic and functional impact of epicardial adipose tissue in heart failure with preserved ejection fraction. *JACC Heart Fail.* 8:657–66

86. Obokata M, Reddy YNV, Pislaru SV, et al. 2017. Evidence supporting the existence of a distinct obese phenotype of heart failure with preserved ejection fraction. *Circulation* 136:6–19
87. Packer M, Lam CSP, Lund LH, et al. 2020. Characterization of the inflammatory-metabolic phenotype of heart failure with a preserved ejection fraction: a hypothesis to explain influence of sex on the evolution and potential treatment of the disease. *Eur. J. Heart Fail.* 22:1551–67
88. Rao VN, Zhao D, Allison MA, et al. 2018. Adiposity and incident heart failure and its subtypes: MESA (Multi-Ethnic Study of Atherosclerosis). *JACC Heart Fail.* 6:999–1007
89. Sorimachi H, Obokata M, Takahashi N, et al. 2021. Pathophysiologic importance of visceral adipose tissue in women with heart failure and preserved ejection fraction. *Eur. Heart J.* 42:1595–605
90. Kitzman DW, Brubaker P, Morgan T, et al. 2016. Effect of caloric restriction or aerobic exercise training on peak oxygen consumption and quality of life in obese older patients with heart failure with preserved ejection fraction: a randomized clinical trial. *JAMA* 315:36–46
91. Pandey A, Parashar A, Kumbhani D, et al. 2015. Exercise training in patients with heart failure and preserved ejection fraction: meta-analysis of randomized control trials. *Circ. Heart Fail.* 8:33–40
92. Mueller S, Winzer EB, Duvinage A, et al. 2021. Effect of high-intensity interval training, moderate continuous training, or guideline-based physical activity advice on peak oxygen consumption in patients with heart failure with preserved ejection fraction: a randomized clinical trial. *JAMA* 325:542–51
93. Hwang SJ, Melenovsky V, Borlaug BA. 2014. Implications of coronary artery disease in heart failure with preserved ejection fraction. *J. Am. Coll. Cardiol.* 63:2817–27
94. Packer DL, Piccini JP, Monahan KH, et al. 2021. Ablation versus drug therapy for atrial fibrillation in heart failure: results from the CABANA trial. *Circulation* 143:1377–90
95. Sugumar H, Nanayakkara S, Vizi D, et al. 2021. A prospective STudy using invAsive haemodynamic measurements foLLowing catheter ablation for AF and early HFpEF: STALL AF-HFpEF. *Eur. J. Heart Fail.* 23:785–96
96. Adamson PB, Abraham WT, Bourge RC, et al. 2014. Wireless pulmonary artery pressure monitoring guides management to reduce decompensation in heart failure with preserved ejection fraction. *Circ. Heart Fail.* 7:935–44
97. Abraham WT, Adamson PB, Bourge RC, et al. 2011. Wireless pulmonary artery haemodynamic monitoring in chronic heart failure: a randomised controlled trial. *Lancet* 377:658–66
98. Pitt B, Pfeffer MA, Assmann SF, et al. 2014. Spironolactone for heart failure with preserved ejection fraction. *N. Engl. J. Med.* 370:1383–92
99. Pfeffer MA, Claggett B, Assmann SF, et al. 2015. Regional variation in patients and outcomes in the Treatment of Preserved Cardiac Function Heart Failure With an Aldosterone Antagonist (TOPCAT) trial. *Circulation* 131:34–42
100. Yancy CW, Jessup M, Bozkurt B, et al. 2017. ACC/AHA/HFSA focused update of the 2013 ACCF/AHA guideline for the management of heart failure: a report of the American College of Cardiology/American Heart Association Task Force on Clinical Practice Guidelines and the Heart Failure Society of America. *Circulation* 136:e137–e161
101. Solomon SD, McMurray JJV, Anand IS, et al. 2019. Angiotensin-neprilysin inhibition in heart failure with preserved ejection fraction. *N. Engl. J. Med.* 381:1609–20
102. McMurray JJV, Jackson AM, Lam CSP, et al. 2020. Effects of sacubitril-valsartan versus valsartan in women compared with men with heart failure and preserved ejection fraction: insights from PARAGON-HF. *Circulation* 141:338–51
103. Solomon SD, Vaduganathan M, Claggett BL, et al. 2020. Sacubitril/valsartan across the spectrum of ejection fraction in heart failure. *Circulation* 141:352–61
104. Vaduganathan M, Claggett BL, Desai AS, et al. 2020. Prior heart failure hospitalization, clinical outcomes, and response to sacubitril/valsartan compared with valsartan in HFpEF. *J. Am. Coll. Cardiol.* 75:245–54
105. Cleland JGF, Bunting KV, Flather MD, et al. 2018. Beta-blockers for heart failure with reduced, mid-range, and preserved ejection fraction: an individual patient-level analysis of double-blind randomized trials. *Eur. Heart J.* 39:26–35

106. Silverman DN, Plante TB, Infeld M, et al. 2019. Association of β -blocker use with heart failure hospitalizations and cardiovascular disease mortality among patients with heart failure with a preserved ejection fraction: a secondary analysis of the TOPCAT trial. *JAMA Netw. Open.* 2:e1916598
107. Bhatt DL, Szarek M, Steg PG, et al. 2021. Sotagliflozin in patients with diabetes and recent worsening heart failure. *N. Engl. J. Med.* 384:117–28
108. Alehagen U, Benson L, Edner M, et al. 2015. Association between use of statins and mortality in patients with heart failure and ejection fraction of ≥ 50 . *Circ. Heart Fail.* 8:862–70
109. Redfield MM, Chen HH, Borlaug BA, et al. 2013. Effect of phosphodiesterase-5 inhibition on exercise capacity and clinical status in heart failure with preserved ejection fraction: a randomized clinical trial. *JAMA* 309:1268–77
110. Redfield MM, Anstrom KJ, Levine JA, et al. 2015. Isosorbide mononitrate in heart failure with preserved ejection fraction. *N. Engl. J. Med.* 373:2314–24
111. Borlaug BA, Anstrom KJ, Lewis GD, et al. 2018. Effect of inorganic nitrite versus placebo on exercise capacity among patients with heart failure with preserved ejection fraction: the INDIE-HFpEF randomized clinical trial. *JAMA* 320:1764–73
112. Armstrong PW, Lam CSP, Anstrom KJ, et al. 2020. Effect of vericiguat versus placebo on quality of life in patients with heart failure and preserved ejection fraction: the VITALITY-HFpEF randomized clinical trial. *JAMA* 324:1512–21
113. Udelson JE, Lewis GD, Shah SJ, et al. 2020. Effect of praligiquat on peak rate of oxygen consumption in patients with heart failure with preserved ejection fraction: the CAPACITY HFpEF randomized clinical trial. *JAMA* 324:1522–31
114. Reddy YNV, Anantha-Narayanan M, Obokata M, et al. 2019. Hemodynamic effects of weight loss in obesity: a systematic review and meta-analysis. *JACC Heart Fail.* 7:678–87
115. Feldman T, Mauri L, Kahwash R, et al. 2018. Transcatheter interatrial shunt device for the treatment of heart failure with preserved ejection fraction (REDUCE LAP-HF I [Reduce Elevated Left Atrial Pressure in Patients With Heart Failure]): a phase 2, randomized, sham-controlled trial. *Circulation* 137:364–75
116. Hasenfuß G, Hayward C, Burkhoff D, et al. 2016. A transcatheter intracardiac shunt device for heart failure with preserved ejection fraction (REDUCE LAP-HF): a multicentre, open-label, single-arm, phase 1 trial. *Lancet* 387:1298–304
117. Kaye DM, Hasenfuß G, Neuzil P, et al. 2016. One-year outcomes after transcatheter insertion of an interatrial shunt device for the management of heart failure with preserved ejection fraction. *Circ. Heart Fail.* 9:e003662
118. Shah SJ, Feldman T, Ricciardi MJ, et al. 2018. One-year safety and clinical outcomes of a transcatheter interatrial shunt device for the treatment of heart failure with preserved ejection fraction in the Reduce Elevated Left Atrial Pressure in Patients With Heart Failure (REDUCE LAP-HF I) trial: a randomized clinical trial. *JAMA Cardiol.* 3:968–77
119. Obokata M, Reddy YNV, Shah SJ, et al. 2019. Effects of interatrial shunt on pulmonary vascular function in heart failure with preserved ejection fraction. *J. Am. Coll. Cardiol.* 74:2539–50
120. Borlaug BA, Carter RE, Melenovsky V, et al. 2017. Percutaneous pericardial resection: a novel potential treatment for heart failure with preserved ejection fraction. *Circ. Heart Fail.* 10:e003612
121. Borlaug BA, Schaff HV, Pochettino A, et al. 2018. Pericardiotomy enhances left ventricular diastolic reserve with volume loading in humans. *Circulation* 138:2295–97
122. Fudim M, Patel MR, Boertz-Marx R, et al. 2021. Splanchnic nerve block mediated changes in stressed blood volume in heart failure. *JACC Heart Fail.* 9:293–300
123. Burkhoff D, Borlaug BA, Shah SJ, et al. 2021. Levosimendan improves hemodynamics and exercise tolerance in PH-HFpEF: results of the randomized placebo-controlled HELP trial. *JACC Heart Fail.* 9:360–70
124. Borlaug BA, Koepp KE, Melenovsky V. 2015. Sodium nitrite improves exercise hemodynamics and ventricular performance in heart failure with preserved ejection fraction. *J. Am. Coll. Cardiol.* 66:1672–82
125. Borlaug BA, Melenovsky V, Koepp KE. 2016. Inhaled sodium nitrite improves rest and exercise hemodynamics in heart failure with preserved ejection fraction. *Circ. Res.* 119:880–86

126. Reddy YNV, Stewart GM, Obokata M, et al. 2021. Peripheral and pulmonary effects of inorganic nitrite during exercise in heart failure with preserved ejection fraction. *Eur. J. Heart Fail.* 23:814–23
127. Shah SJ, Kitzman DW, Borlaug BA, et al. 2016. Phenotype-specific treatment of heart failure with preserved ejection fraction: a multiorgan roadmap. *Circulation* 134:73–90
128. Sorimachi H, Omote K, Borlaug BA. 2021. Clinical phenogroups in heart failure with preserved ejection fraction. *Heart Fail. Clin.* 17:483–98